

AtHome™

Inspiring Your Home & Lifestyle

IN ARKANSAS

ONE
of a
Kind

New Construction
Homes to Inspire

+
FIND A PRO
FOR YOUR NEXT
PROJECT





Lee Jofa's Paolo Moschino for Nicholas Haslam line featuring (from left): "Zelda Stripe" pillow in Blue, "Brussels" pillow in Oyster, "Beijing Blossom" pillow in Navy, and "Elba Stripe" bench cushion in Navy. The wallpaper is also "Beijing Blossom" in Navy. *Cynthia East Fabrics, cynthiaeastfabrics.com; Designer Effects, designereffects.net; Draped & Tailored, facebook.com/drapedandtailored; Fabric Gallery, thefabricgallery.com; Laura's Draperies & Blinds, laurasdraperies.com; M. Grace at Home, mgraceathome.com; Statements for the Home, statementsforthehome.com*

FETCHING FABRICS

Textiles for Every Style

Update your look with new draperies, upholstery,
or accessories in one of these selections

PRODUCER TIFFANY ADAMS

If you love tried-and-true classics look to stripes, spots, and plaids.



1



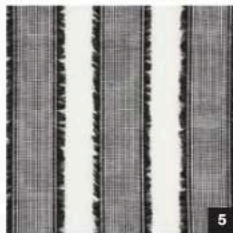
2



3



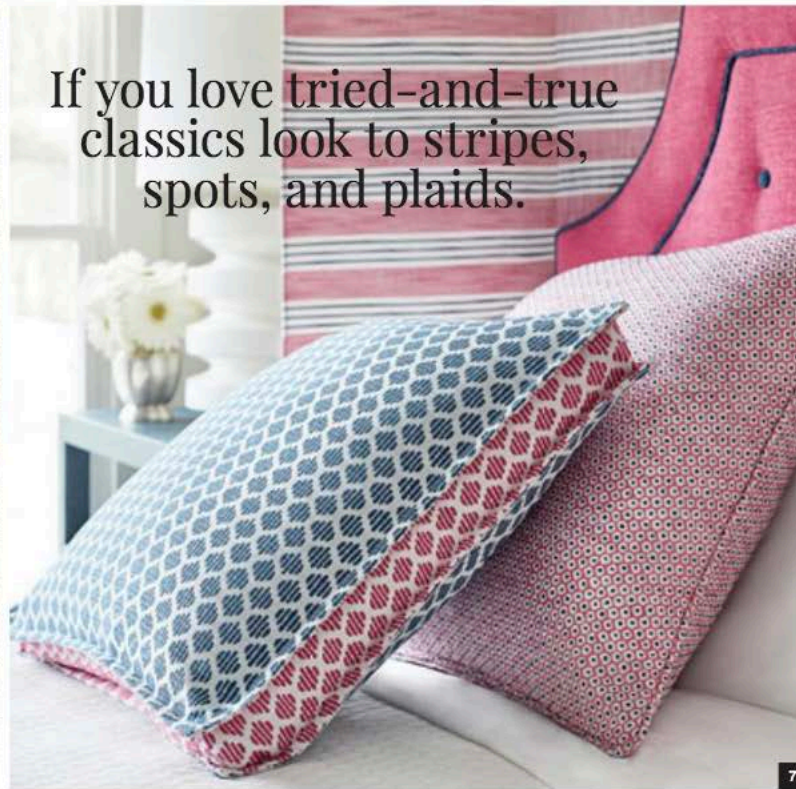
4



5



6



7

1 Stout "Gibson" in Mineral. Cynthia East Fabrics, cynthiaeastfabrics.com; Designer Effects, designereffects.net; Draped & Tailored, facebook.com/drapedandtailored; Fabrics Etc., facebook.com/fabricsetclr; Fabric Gallery, thefabricgallery.com; Interior Creations, searcydesigncenter.com; Laura's Draperies & Blinds, laurasdraperies.com; M. Grace at Home, mgraceathome.com; Statements for the Home, statementsforthehome.com

2 Schumacher "Cheetah" velvet in Natural. Cynthia East Fabrics, cynthiaeastfabrics.com; Designer Effects, designereffects.net; Draped & Tailored, facebook.com/drapedandtailored; Fabrics Etc., facebook.com/fabricsetclr; Fabric Gallery, thefabricgallery.com; Interior Creations, searcydesigncenter.com; Laura's Draperies & Blinds, laurasdraperies.com; M. Grace at Home, mgraceathome.com; Statements for the Home, statementsforthehome.com

3 Lee Jofa "Alma" in Indigo. Cynthia East Fabrics, cynthiaeastfabrics.com; Designer Effects, designereffects.net; Draped & Tailored, facebook.com/drapedandtailored; Fabric Gallery, thefabricgallery.com; Laura's Draperies & Blinds, laurasdraperies.com; M. Grace at Home, mgraceathome.com; Statements for the Home, statementsforthehome.com

4 Kravet Basics "35774-8." Cynthia East Fabrics, cynthiaeastfabrics.com; Designer Effects, designereffects.net; Draped & Tailored, facebook.com/drapedandtailored; Fabrics Etc., facebook.com/fabricsetclr; Fabric Gallery, thefabricgallery.com; Interior Creations, searcydesigncenter.com; Laura's

Draperies & Blinds, laurasdraperies.com; M. Grace at Home, mgraceathome.com; Statements for the Home, statementsforthehome.com

5 Schumacher "Tulum" in Black. Cynthia East Fabrics, cynthiaeastfabrics.com; Designer Effects, designereffects.net; Draped & Tailored, facebook.com/drapedandtailored; Fabrics Etc., facebook.com/fabricsetclr; Fabric Gallery, thefabricgallery.com; Interior Creations, searcydesigncenter.com; Laura's Draperies & Blinds, laurasdraperies.com; M. Grace at Home, mgraceathome.com; Statements for the Home, statementsforthehome.com

6 Thibaut "Southport Stripe" in Flax and Grey. Cynthia East Fabrics, cynthiaeastfabrics.com; Designer Effects, designereffects.net; Draped & Tailored, facebook.com/drapedandtailored; Fabrics Etc., facebook.com/fabricsetclr; Fabric Gallery, thefabricgallery.com; Laura's Draperies & Blinds, laurasdraperies.com; M. Grace at Home, mgraceathome.com; Statements for the Home, statementsforthehome.com

7 Thibaut "Sadie" pillow in Blue with Pink sides, "Pixie" pillow in Peony and Marine, and "Vista" headboard in Peony with "Southport Stripe" in Peony and Navy shown behind the bed. Cynthia East Fabrics, cynthiaeastfabrics.com; Designer Effects, designereffects.net; Draped & Tailored, facebook.com/drapedandtailored; Fabrics Etc., facebook.com/fabricsetclr; Fabric Gallery, thefabricgallery.com; Laura's Draperies & Blinds, laurasdraperies.com; M. Grace at Home, mgraceathome.com; Statements for the Home, statementsforthehome.com



If you appreciate a room with an edge, try abstract prints and artful motifs.

8

8 Stout "Union" drapes in Mushroom, "Agatha" pillow in Berry, "Ranier" pillow in Taupe, "Rubio" pillow in Sandalwood, and bench covered in "Jasper" in Taupe. *Cynthia East Fabrics, cynthiaeastfabrics.com; Designer Effects, designereffects.net; Draped & Tailored, facebook.com/drapedandtailored; Fabrics Etc., facebook.com/fabricsetclr; Fabric Gallery, thefabricgallery.com; Interior Creations, searcydesigncenter.com; Laura's Draperies & Blinds, laurasdraperies.com; M. Grace at Home, mgraceathome.com; Statements for the Home, statementsforthehome.com*

9 Kravet "Doodle" in Flax. *Cynthia East Fabrics, cynthiaeastfabrics.com; Designer Effects, designereffects.net; Draped & Tailored, facebook.com/drapedandtailored; Fabrics Etc., facebook.com/fabricsetclr; Fabric Gallery, thefabricgallery.com; Interior Creations, searcydesigncenter.com; Laura's Draperies & Blinds, laurasdraperies.com; M. Grace at Home, mgraceathome.com; Statements for the Home, statementsforthehome.com*

10 Lee Jofa "Sieve" in Shadow. *Cynthia East Fabrics, cynthiaeastfabrics.com; Designer Effects, designereffects.net; Draped & Tailored, facebook.com/drapedandtailored; Fabric Gallery, thefabricgallery.com; Laura's Draperies & Blinds, laurasdraperies.com; M. Grace at Home, mgraceathome.com; Statements for the Home, statementsforthehome.com*

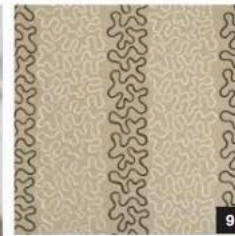
11 Magnolia Fabrics "Hutton Persian." *Cynthia East Fabrics, cynthiaeastfabrics.com; Designer Effects, designereffects.net; Draped & Tailored, facebook.com/drapedandtailored;*

Fabrics Etc., facebook.com/fabricsetclr; Fabric Gallery, thefabricgallery.com; Interior Creations, searcydesigncenter.com; Laura's Draperies & Blinds, laurasdraperies.com; M. Grace at Home, mgraceathome.com; Statements for the Home, statementsforthehome.com

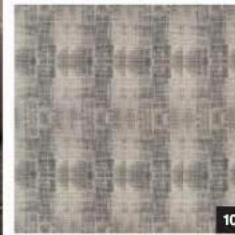
12 Robert Allen "Hot Spot" in Bronze. *Cynthia East Fabrics, cynthiaeastfabrics.com; Designer Effects, designereffects.net; Draped & Tailored, facebook.com/drapedandtailored; Fabrics Etc., facebook.com/fabricsetclr; Fabric Gallery, thefabricgallery.com; Interior Creations, searcydesigncenter.com; Laura's Draperies & Blinds, laurasdraperies.com; M. Grace at Home, mgraceathome.com; Statements for the Home, statementsforthehome.com*

13 Schumacher "Free Form" in Black. *Cynthia East Fabrics, cynthiaeastfabrics.com; Designer Effects, designereffects.net; Draped & Tailored, facebook.com/drapedandtailored; Fabrics Etc., facebook.com/fabricsetclr; Fabric Gallery, thefabricgallery.com; Interior Creations, searcydesigncenter.com; Laura's Draperies & Blinds, laurasdraperies.com; M. Grace at Home, mgraceathome.com; Statements for the Home, statementsforthehome.com*

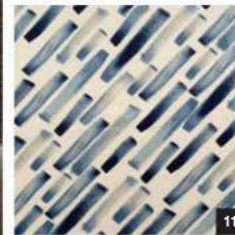
14 Stout "Shepard" in Clove. *Cynthia East Fabrics, cynthiaeastfabrics.com; Designer Effects, designereffects.net; Draped & Tailored, facebook.com/drapedandtailored; Fabrics Etc., facebook.com/fabricsetclr; Fabric Gallery, thefabricgallery.com; Interior Creations, searcydesigncenter.com; Laura's Draperies & Blinds, laurasdraperies.com; M. Grace at Home, mgraceathome.com; Statements for the Home, statementsforthehome.com*



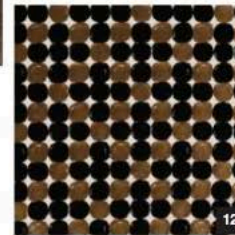
9



10



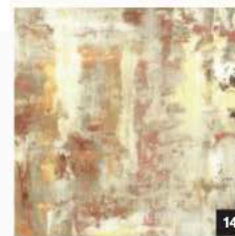
11



12



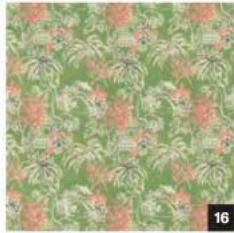
13



14



15



16



17



18



19



20



If you're inspired by the outdoors, incorporate flora and fauna.

In addition to the retailers listed here, many of these fabrics are available through your favorite local interior designer.

21

15 Anna French "Kalamkari" in Blue and White. Cynthia East Fabrics, cynthiaeastfabrics.com; Designer Effects, designereffects.net; Draped & Tailored, facebook.com/drapedandtailored; Fabrics Etc., facebook.com/fabricsetclr; Fabric Gallery, thefabricgallery.com; Laura's Draperies & Blinds, laurasdraperies.com; M. Grace at Home, mgraceathome.com; Statements for the Home, statementsforthehome.com

16 Brunswig & Fils "Tongli" in Fern. Cynthia East Fabrics, cynthiaeastfabrics.com; Designer Effects, designereffects.net; Draped & Tailored, facebook.com/drapedandtailored; Fabric Gallery, thefabricgallery.com; Laura's Draperies & Blinds, laurasdraperies.com; M. Grace at Home, mgraceathome.com; Statements for the Home, statementsforthehome.com

17 Magnolia Fabrics "Hippra" in Rainbow. Cynthia East Fabrics, cynthiaeastfabrics.com; Designer Effects, designereffects.net; Draped & Tailored, facebook.com/drapedandtailored; Fabrics Etc., facebook.com/fabricsetclr; Fabric Gallery, thefabricgallery.com; Interior Creations, searcydesigncenter.com; Laura's Draperies & Blinds, laurasdraperies.com; M. Grace at Home, mgraceathome.com; Statements for the Home, statementsforthehome.com

18 Lulu DK "Kipling" in Blush. Cynthia East Fabrics, cynthiaeastfabrics.com; Designer Effects, designereffects.net; Draped & Tailored, facebook.com/drapedandtailored; Fabrics Etc., facebook.com/fabricsetclr; Fabric Gallery, thefabricgallery.com; Interior Creations, searcydesigncenter.com; Laura's

Draperies & Blinds, laurasdraperies.com; M. Grace at Home, mgraceathome.com; Statements for the Home, statementsforthehome.com

19 Schumacher "Bermuda Blossoms" in Yellow. Cynthia East Fabrics, cynthiaeastfabrics.com; Designer Effects, designereffects.net; Draped & Tailored, facebook.com/drapedandtailored; Fabrics Etc., facebook.com/fabricsetclr; Fabric Gallery, thefabricgallery.com; Interior Creations, searcydesigncenter.com; Laura's Draperies & Blinds, laurasdraperies.com; M. Grace at Home, mgraceathome.com; Statements for the Home, statementsforthehome.com

20 Stout "Aldrin" in Slate. Cynthia East Fabrics, cynthiaeastfabrics.com; Designer Effects, designereffects.net; Draped & Tailored, facebook.com/drapedandtailored; Fabrics Etc., facebook.com/fabricsetclr; Fabric Gallery, thefabricgallery.com; Interior Creations, searcydesigncenter.com; Laura's Draperies & Blinds, laurasdraperies.com; M. Grace at Home, mgraceathome.com; Statements for the Home, statementsforthehome.com

21 Stout's Cath Kidston Collection "Mellow" in Spring. Cynthia East Fabrics, cynthiaeastfabrics.com; Designer Effects, designereffects.net; Draped & Tailored, facebook.com/drapedandtailored; Fabrics Etc., facebook.com/fabricsetclr; Fabric Gallery, thefabricgallery.com; Interior Creations, searcydesigncenter.com; Laura's Draperies & Blinds, laurasdraperies.com; M. Grace at Home, mgraceathome.com; Statements for the Home, statementsforthehome.com

Photography courtesy of vendors